



Instituto Tecnológico de Salina Cruz

Fundamentos de Redes

Semestre enero – julio 2015

Reporte de Practica

Practica nº 2

Unidad 2

Objetivo:

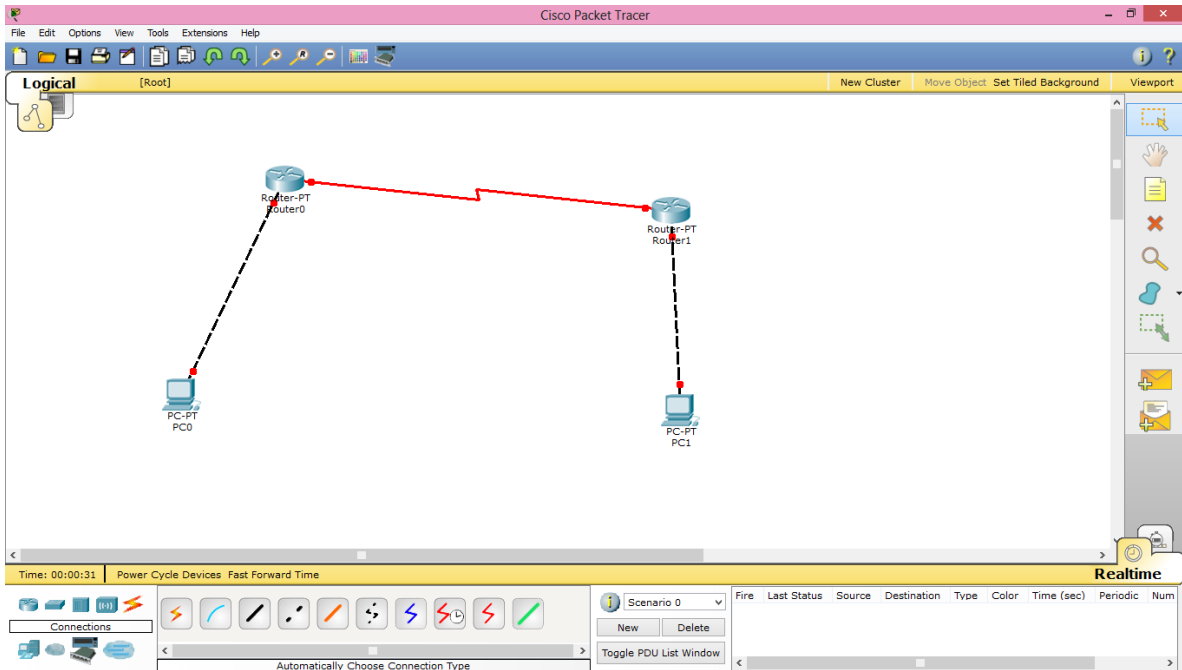
Identificar el enrutamiento estático y dinámico, además de aplicar el enrutamiento estático a una red WAN.

Instrucciones:

- 1.- Cambiar de nombre a los dispositivos.
- 2.- configurar banner a ambos router's.
- 3.- levantar los puertos fa0 a ambos routers.
- 4.- levantar los seriales de ambos routers.

Materiales:

- 1.- computadora.
- 2.- Packet tracet.



The screenshot shows the configuration window for Router0, specifically the Global Settings tab. The window is titled "Router0" and has tabs for Physical, Config, and CLI. The Global Settings section includes:

- GLOBAL**
 - Settings
 - Algorithm Settings
- ROUTING**
 - Static
 - RIP
- INTERFACE**
 - FastEthernet0/0
 - FastEthernet1/0
 - Serial2/0
 - Serial3/0
 - FastEthernet4/0
 - FastEthernet5/0

The Global Settings section is expanded, showing:

- Display Name: Router0
- Hostname: alfa
- NVRAM: Erase, Save
- Startup Config: Load..., Export...
- Running Config: Merge..., Export...

At the bottom of the window, there is a section for Equivalent IOS Commands:

```

Configure Host: configuration dialog? [yes/no]:
Please answer 'yes' or 'no':
Continue with configuration dialog? [yes/no]: n
Press RETURN to get started!
  
```

Configuración de la contraseña del ruter.

```
Router0
Physical Config CLI
IOS Command Line Interface
63488K bytes of ATA CompactFlash (Read/Write)

--- System Configuration Dialog ---

Continue with configuration dialog? [yes/no]:
% Please answer 'yes' or 'no'.
Continue with configuration dialog? [yes/no]: n

Press RETURN to get started!

Router>enable
Router#
Router#configure terminal
Enter configuration commands, one per line. End with CNTL/Z.
Router(config)#hostname alfa
alfa(config)#
alfa(config)#config terminal
%Invalid hex value
alfa(config)#conf terminal
%Invalid hex value
alfa(config)#enable password azul
alfa(config)#
```

Copy Paste

```
alfa>enable
Password:
alfa#
```

Copy Paste

Configuración del banner.

```
Router0
Physical Config CLI
IOS Command Line Interface

alfa>enable
Password:
alfa#conf t
Enter configuration commands, one per line. End with CNTL/Z.
alfa(config)#banner motd #Redes de Computadoras Eduardo Salazar Irrizari Unidad
2
Enter TEXT message. End with the character '#'.
alfa(config)#banner motd #Redes de Computadoras Eduardo Salazar Irrizari Unidad
2

alfa(config)#exit
alfa#
%SYS-5-CONFIG_I: Configured from console by console
alfa#exit
```

Copy Paste

Después procederemos a levantar el puesto fa0

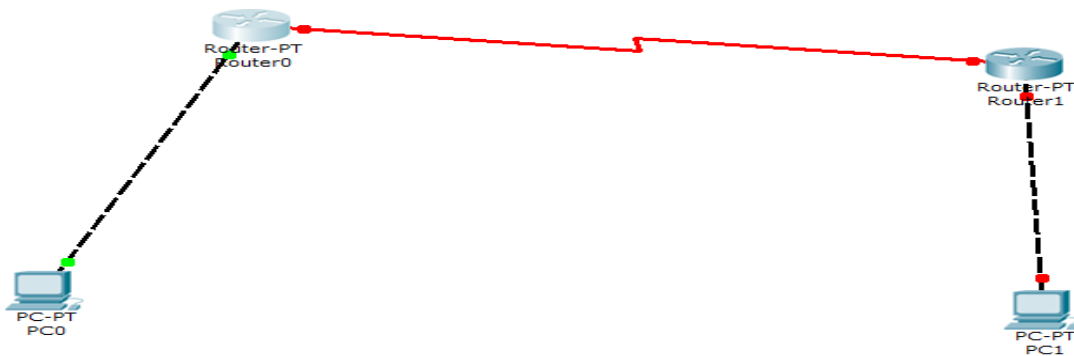
```
Router0
Physical Config CLI
IOS Command Line Interface

Redes de Computadoras Eduardo Salazar Irrizari Unidad 2

banner motd
alfa>enable
Password:
alfa#conf t
Enter configuration commands, one per line. End with CNTL/Z.
alfa(config)#interface fa0/0
alfa(config-if)#no shut

alfa(config-if)#
%LINK-5-CHANGED: Interface FastEthernet0/0, changed state to up
%LINEPROTO-5-UPDOWN: Line protocol on Interface FastEthernet0/0, changed state to up
alfa(config-if)#
```

Y se muestra en color verde la conexión.



Después debemos levantar los seriales del router.

```
Router0
Physical Config CLI
IOS Command Line Interface

Redes de Computadoras Eduardo Salazar Irrizari Unidad 2

banner motd
alfa>enable
Password:
alfa#conf t
Enter configuration commands, one per line. End with CNTL/Z.
alfa(config)#interface fa0/0
alfa(config-if)#no shut

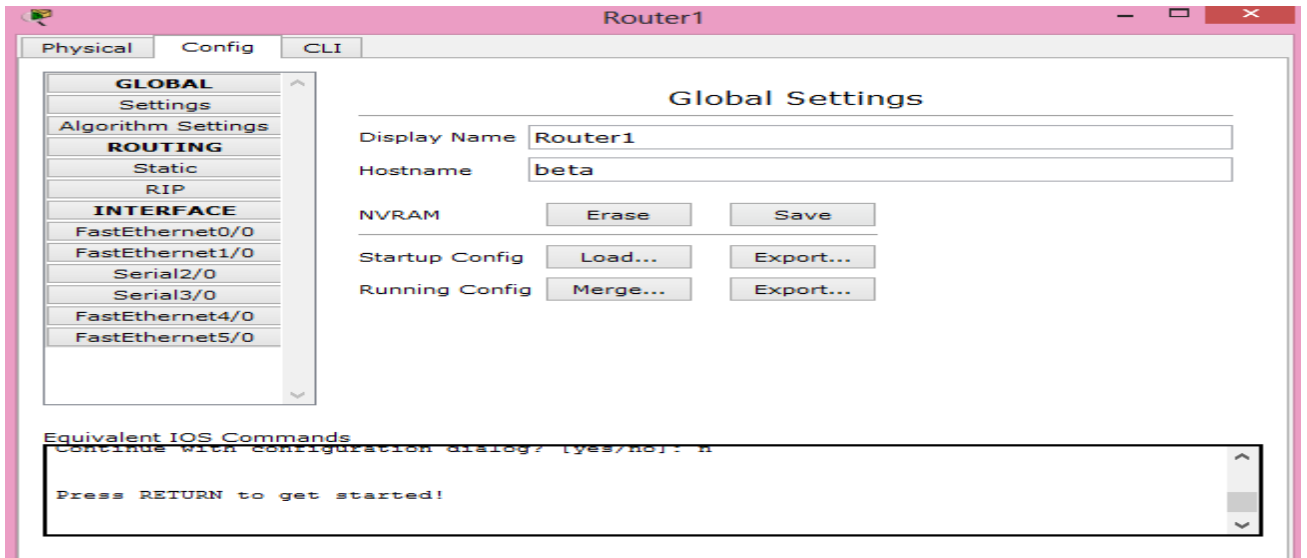
alfa(config-if)#
%LINK-5-CHANGED: Interface FastEthernet0/0, changed state to up
%LINEPROTO-5-UPDOWN: Line protocol on Interface FastEthernet0/0, changed state to up

alfa(config-if)#ip route 192.168.2.0 255.255.255.0 serial2/0
alfa(config)#interface serial2/0
alfa(config-if)#no shut

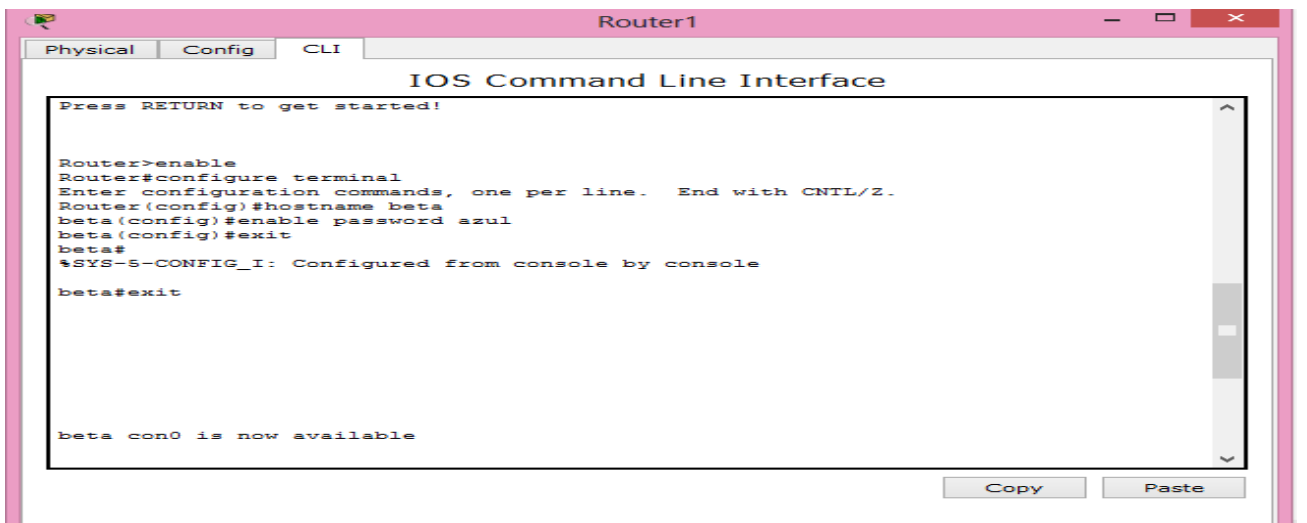
%LINK-5-CHANGED: Interface Serial2/0, changed state to down
alfa(config-if)#
alfa(config-if)#
```

Después de realizarle todo ese rollo al router alfa, es necesario volver a hacer el mismo proceso pero al router beta.

Primero pasamos a cambiarle el nombre del router.

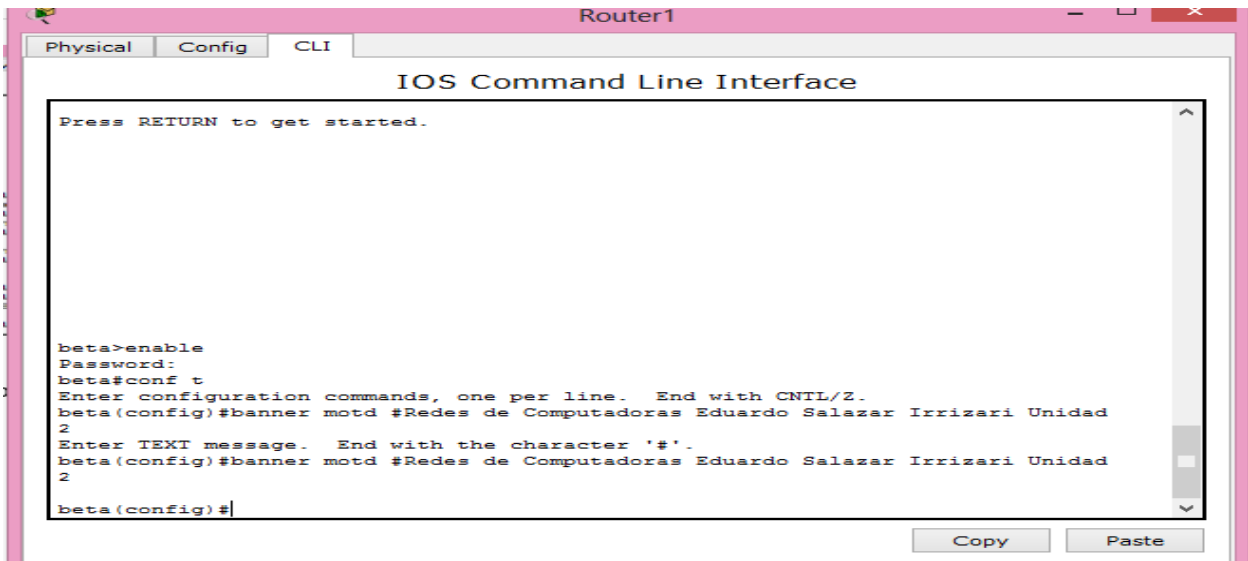


Después le configuramos la contraseña.



```
beta>enable  
Password:  
beta#
```

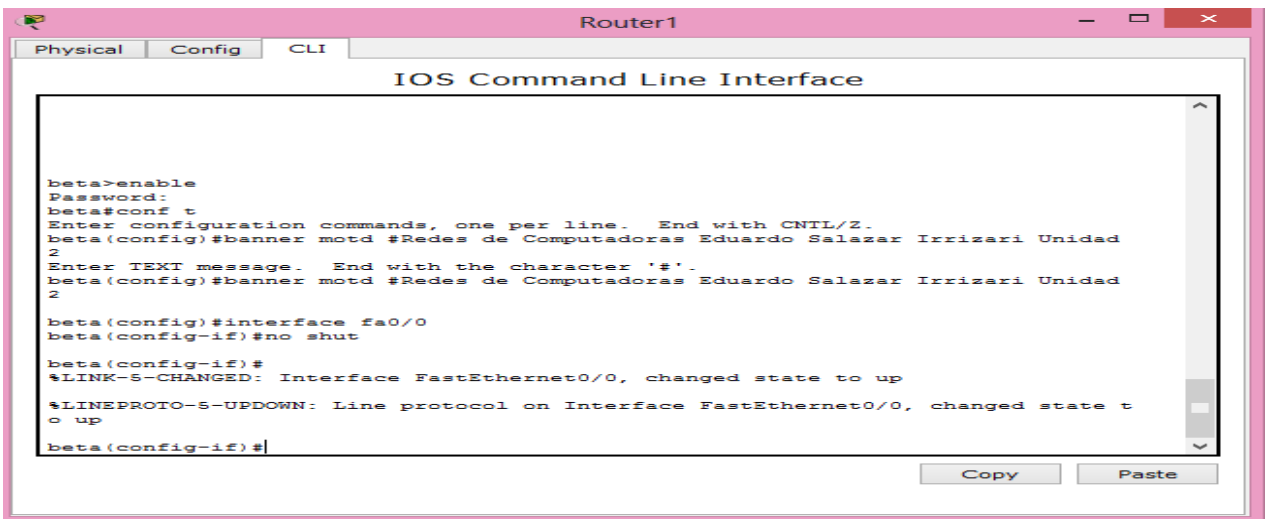
Después se le agrega lo que es el Banner.



```
Router1
Physical Config CLI
IOS Command Line Interface
Press RETURN to get started.

beta>enable
Password:
beta#conf t
Enter configuration commands, one per line. End with CNTL/Z.
beta(config)#banner motd #Redes de Computadoras Eduardo Salazar Irrizari Unidad
2
Enter TEXT message. End with the character '#'.
beta(config)#banner motd #Redes de Computadoras Eduardo Salazar Irrizari Unidad
2
beta(config)#
```

Posteriormente se levanta el puerto fa0.



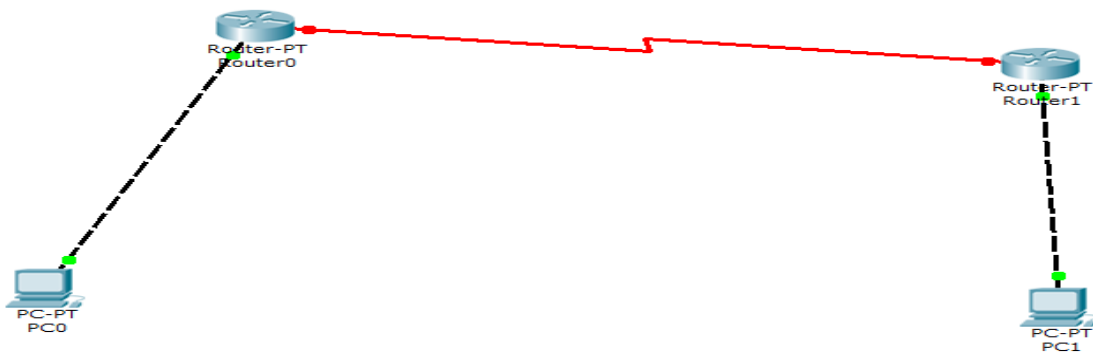
```
Router1
Physical Config CLI
IOS Command Line Interface

beta>enable
Password:
beta#conf t
Enter configuration commands, one per line. End with CNTL/Z.
beta(config)#banner motd #Redes de Computadoras Eduardo Salazar Irrizari Unidad
2
Enter TEXT message. End with the character '#'.
beta(config)#banner motd #Redes de Computadoras Eduardo Salazar Irrizari Unidad
2

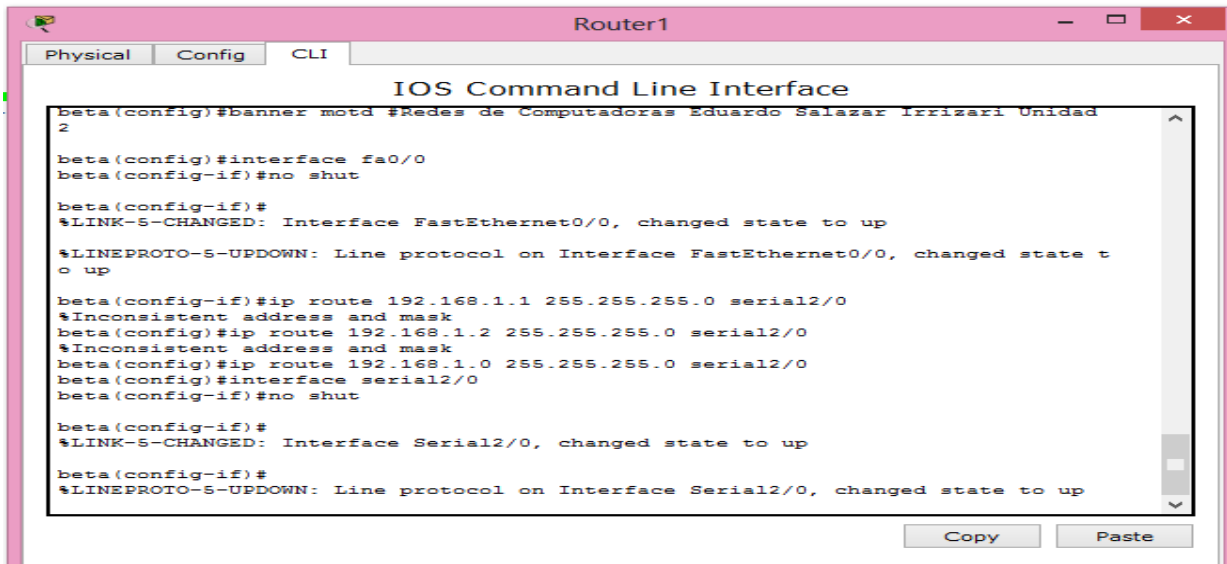
beta(config)#interface fa0/0
beta(config-if)#no shut

beta(config-if)#
%LINK-S-CHANGED: Interface FastEthernet0/0, changed state to up
%LINEPROTO-S-UPDOWN: Line protocol on Interface FastEthernet0/0, changed state to up
beta(config-if)#
```

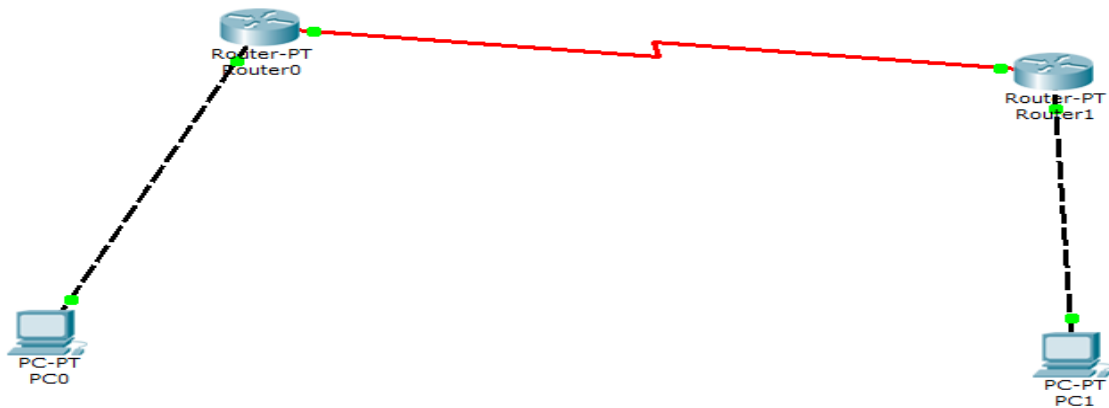
De ahí se observa que en la maquina cambia de color.



De ahí es necesario levantar los seriales del router.



```
Router1
Physical Config CLI
IOS Command Line Interface
beta(config)#banner motd #Redes de Computadoras Eduardo Salazar Irrizari Unidad
2
beta(config)#interface fa0/0
beta(config-if)#no shut
beta(config-if)#
%LINK-S-CHANGED: Interface FastEthernet0/0, changed state to up
%LINEPROTO-S-UPDOWN: Line protocol on Interface FastEthernet0/0, changed state t
o up
beta(config-if)#ip route 192.168.1.1 255.255.255.0 serial2/0
%Inconsistent address and mask
beta(config)#ip route 192.168.1.2 255.255.255.0 serial2/0
%Inconsistent address and mask
beta(config)#ip route 192.168.1.0 255.255.255.0 serial2/0
beta(config)#interface serial2/0
beta(config-if)#no shut
beta(config-if)#
%LINK-S-CHANGED: Interface Serial2/0, changed state to up
beta(config-if)#
%LINEPROTO-S-UPDOWN: Line protocol on Interface Serial2/0, changed state to up
Copy Paste
```

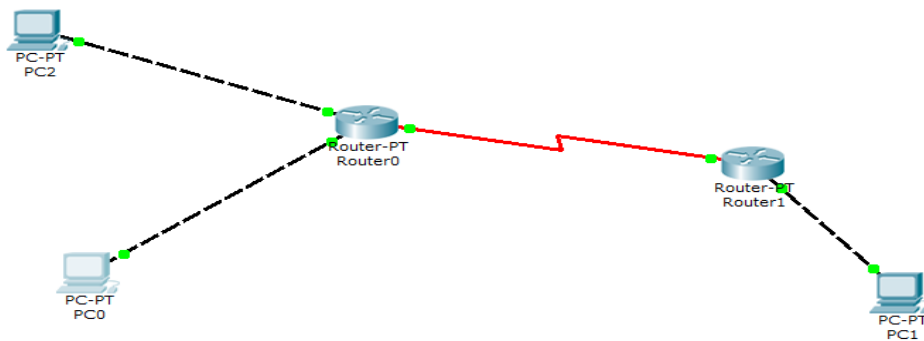


Después de realizar todo eso es necesario levantar los demás puertos, que a continuación se realizaran.

```
Router0
Physical Config CLI
IOS Command Line Interface

Redes de Computadoras Eduardo Salazar Irizari Unidad 2
banner motd
alfa>enable
Password:
alfa#conf t
Enter configuration commands, one per line. End with CNTL/Z.
alfa(config)#interface fa1/1
%Invalid interface type and number
alfa(config)#interface fa1/0
alfa(config-if)#no shut

alfa(config-if)#
%LINK-5-CHANGED: Interface FastEthernet1/0, changed state to up
%LINEPROTO-5-UPDOWN: Line protocol on Interface FastEthernet1/0, changed state to up
alfa(config-if)#
```



A continuación es necesario levantar los puertos fa4/0 y fa5/0.

```
Router0
Physical Config CLI
IOS Command Line Interface

alfa>enable
Password:
alfa#conf t
Enter configuration commands, one per line. End with CNTL/Z.
alfa(config)#interface fa1/1
%Invalid interface type and number
alfa(config)#interface fa1/0
alfa(config-if)#no shut

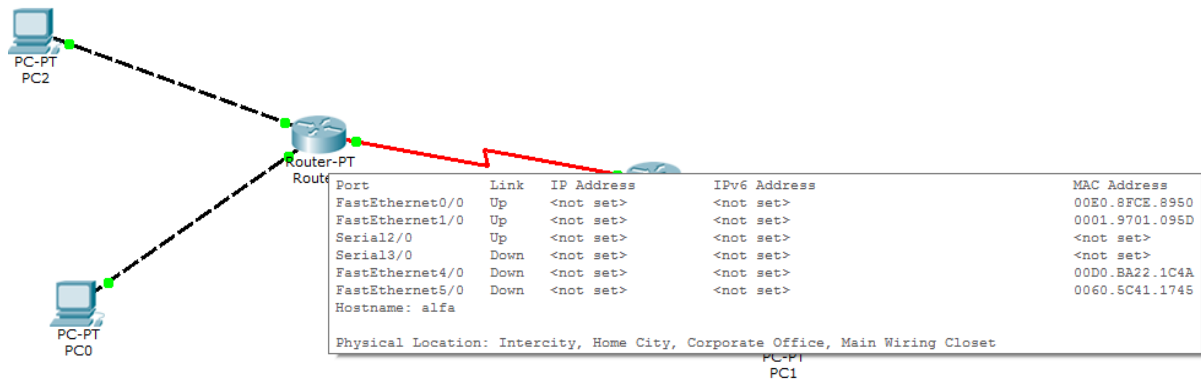
alfa(config-if)#
%LINK-5-CHANGED: Interface FastEthernet1/0, changed state to up
%LINEPROTO-5-UPDOWN: Line protocol on Interface FastEthernet1/0, changed state to up

alfa(config-if)#interface fa4/0
alfa(config-if)#no shut

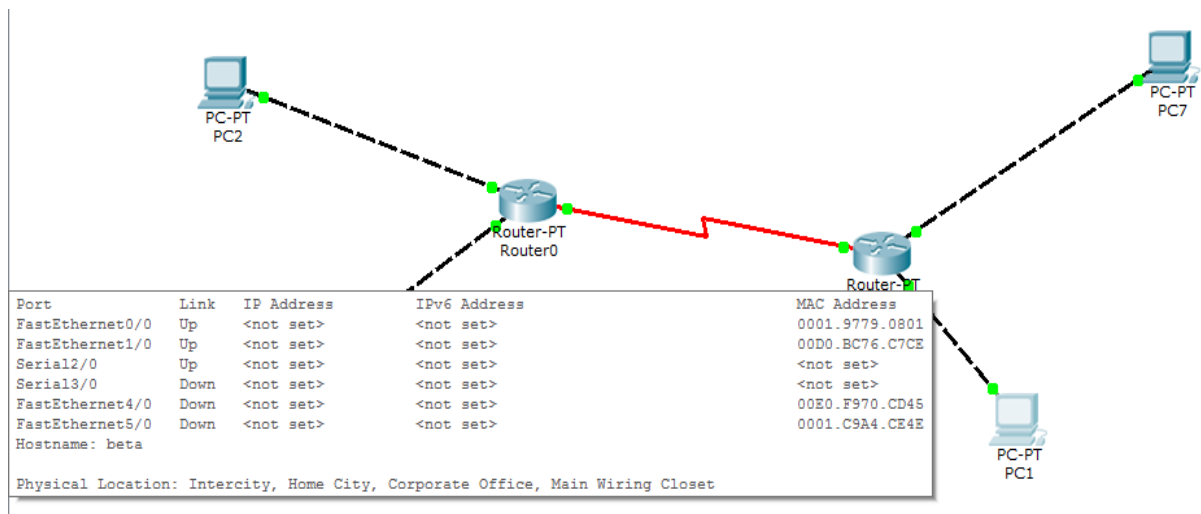
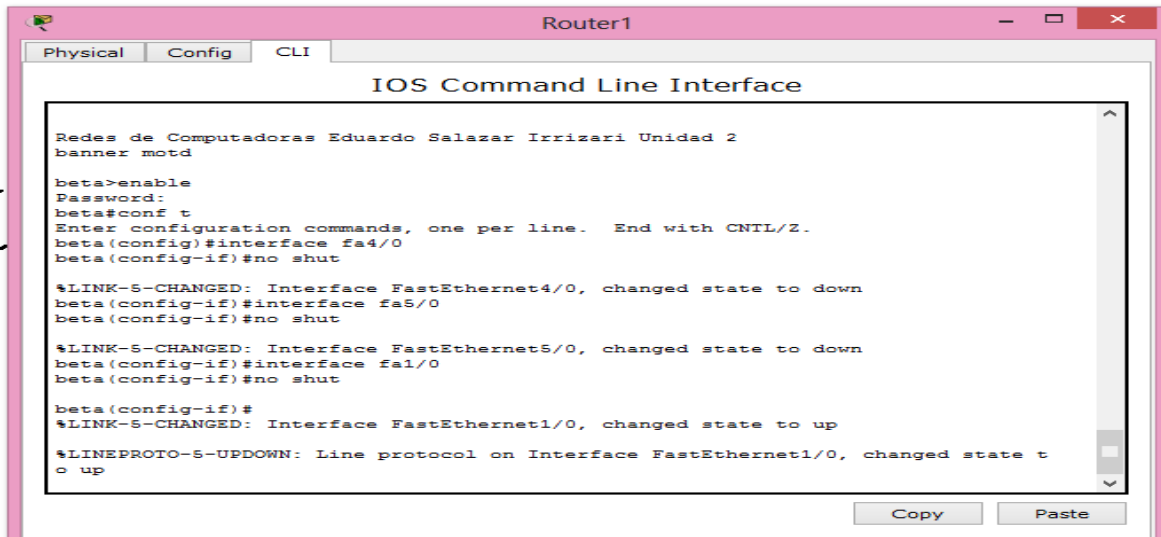
%LINK-5-CHANGED: Interface FastEthernet4/0, changed state to down
alfa(config-if)#
alfa(config-if)#interface fa5/0
alfa(config-if)#no shut

%LINK-5-CHANGED: Interface FastEthernet5/0, changed state to down
alfa(config-if)#
```

Como se muestra en la tabla de ruteo, nos muestra como ya están levados esos puertos.

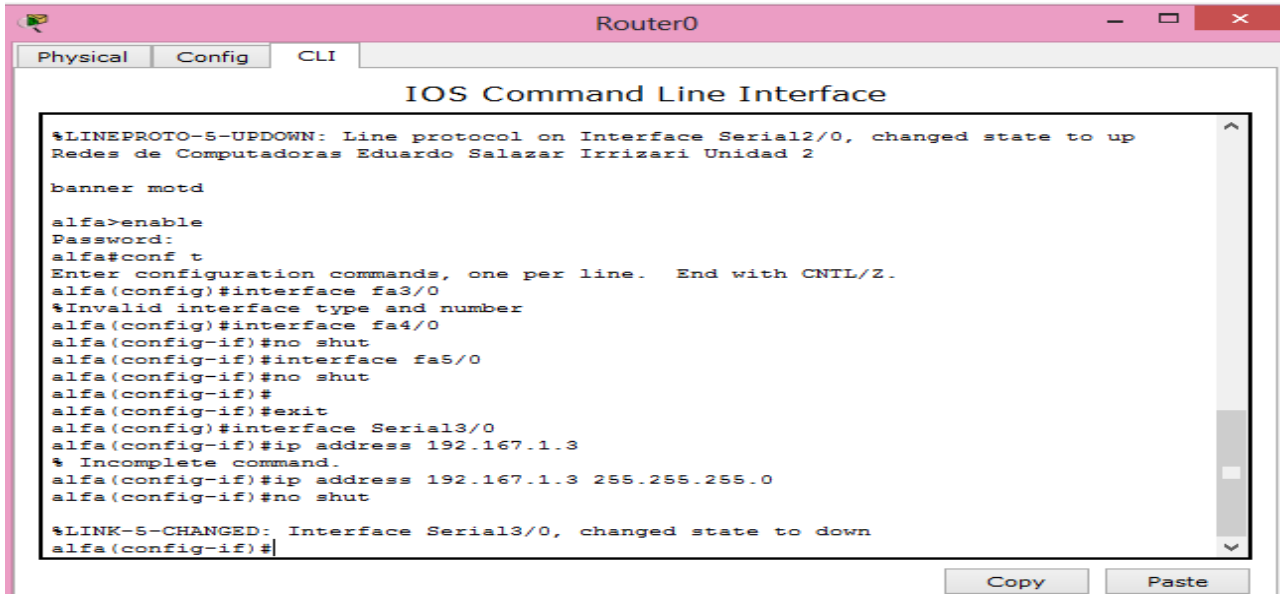


Se hace lo mismo con el otro router.



Es necesario igual levantar los seriales de los routers, pero para comprobar la conexión o levantamiento de los seriales es necesario conectarlo con otros routers.

Primero que nada levantamos el segundo puerto del primer router.



```
Router0
Physical Config CLI
IOS Command Line Interface

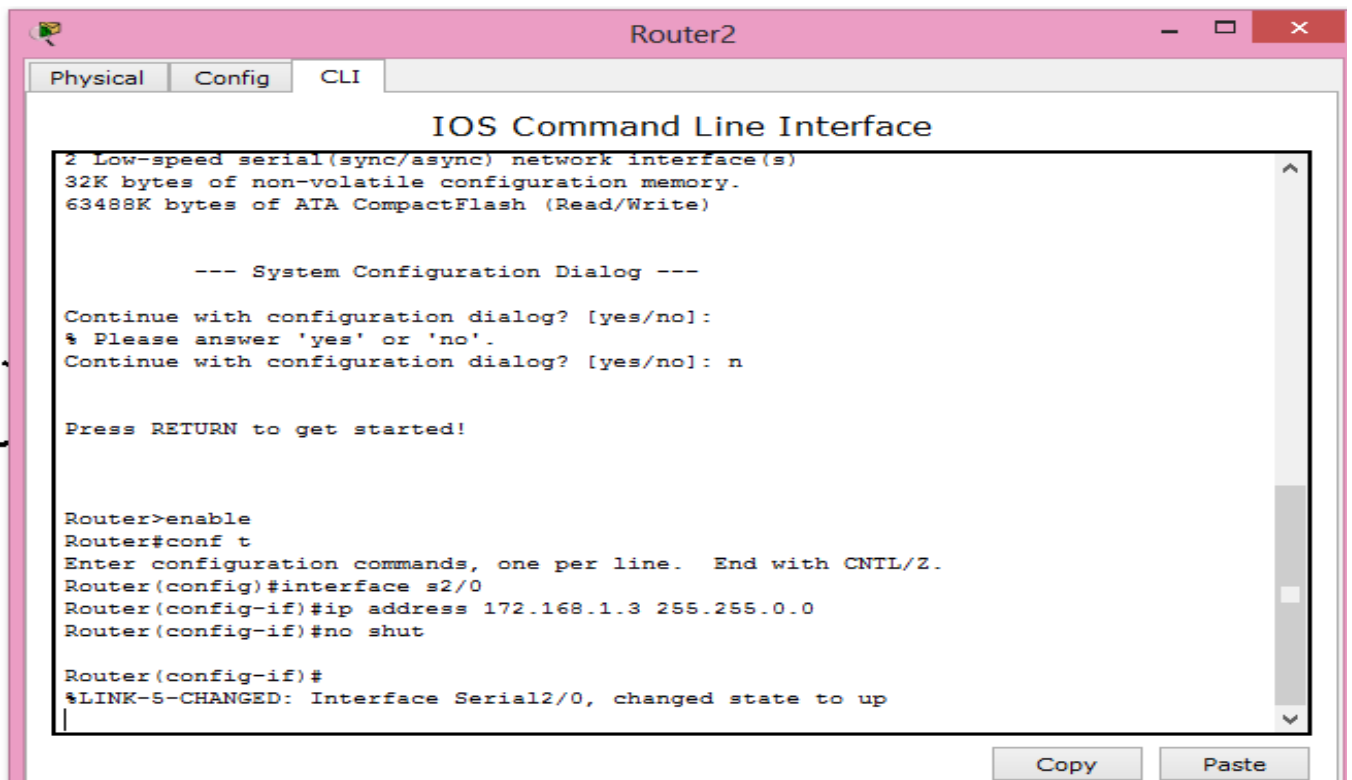
%LINEPROTO-5-UPDOWN: Line protocol on Interface Serial2/0, changed state to up
Redes de Computadoras Eduardo Salazar Irrizari Unidad 2

banner motd

alfa>enable
Password:
alfa#conf t
Enter configuration commands, one per line. End with CNTL/Z.
alfa(config)#interface fa3/0
%Invalid interface type and number
alfa(config)#interface fa4/0
alfa(config-if)#no shut
alfa(config-if)#interface fa5/0
alfa(config-if)#no shut
alfa(config-if)#
alfa(config-if)#exit
alfa(config)#interface Serial3/0
alfa(config-if)#ip address 192.167.1.3
% Incomplete command.
alfa(config-if)#ip address 192.167.1.3 255.255.255.0
alfa(config-if)#no shut

%LINK-5-CHANGED: Interface Serial3/0, changed state to down
alfa(config-if)#
```

Después de eso hay que levantarle el serial al router 3 para poder conectar.



```
Router2
Physical Config CLI
IOS Command Line Interface

2 Low-speed serial(sync/async) network interface(s)
32K bytes of non-volatile configuration memory.
63488K bytes of ATA CompactFlash (Read/Write)

--- System Configuration Dialog ---

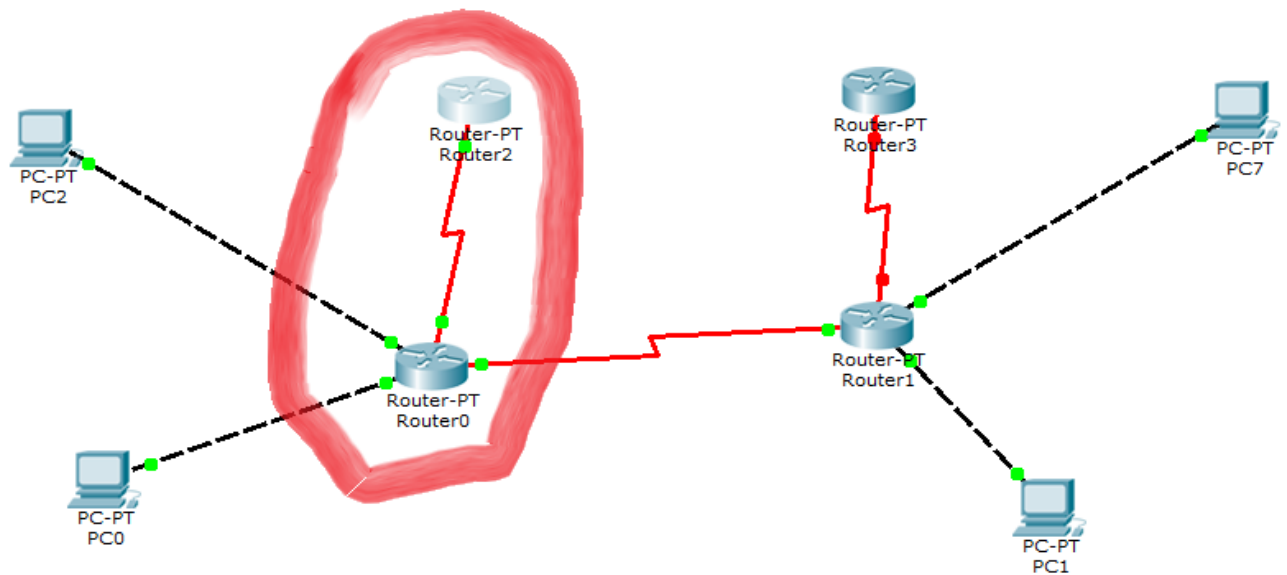
Continue with configuration dialog? [yes/no]:
% Please answer 'yes' or 'no'.
Continue with configuration dialog? [yes/no]: n

Press RETURN to get started!

Router>enable
Router#conf t
Enter configuration commands, one per line. End with CNTL/Z.
Router(config)#interface s2/0
Router(config-if)#ip address 172.168.1.3 255.255.0.0
Router(config-if)#no shut

Router(config-if)#
%LINK-5-CHANGED: Interface Serial2/0, changed state to up
```

Podemos comprobar la conexión

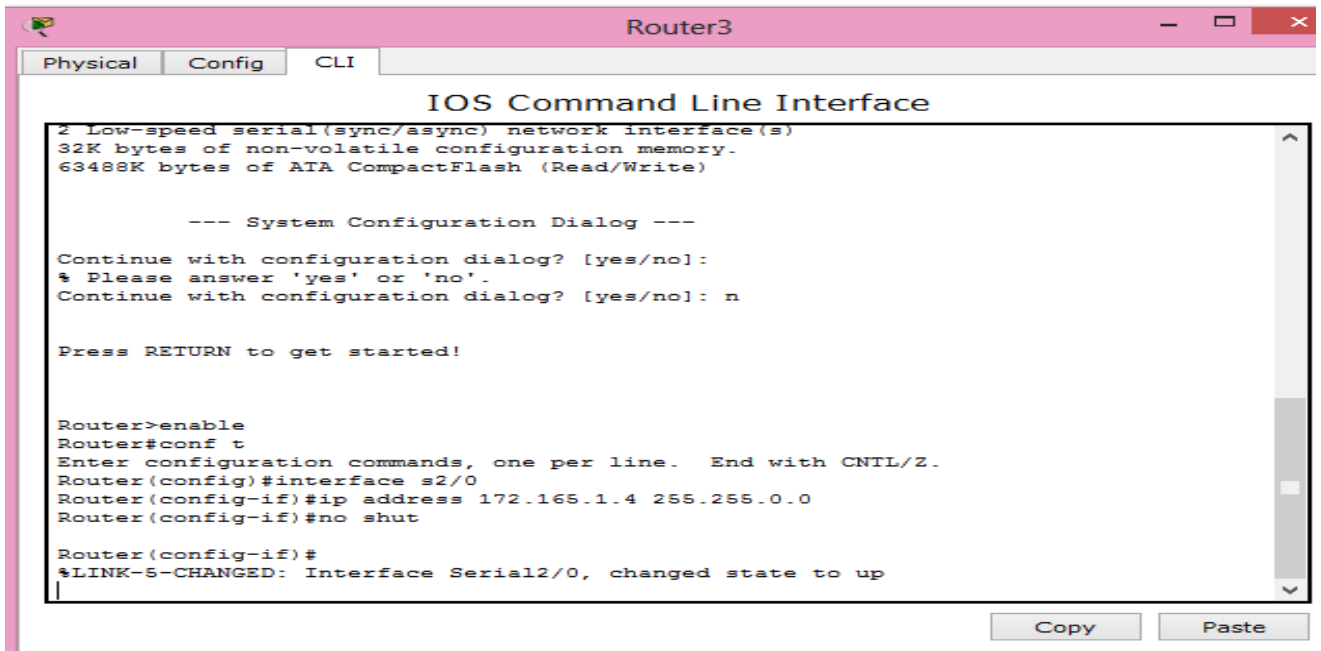


Después es necesario levantar el serial3/0 del router 2.

```
Router1
Physical Config CLI
IOS Command Line Interface
beta(config-if)#
beta(config-if)#exit
beta(config)#interface FastEthernet4/0
beta(config-if)#
beta(config-if)#exit
beta(config)#interface FastEthernet5/0
beta(config-if)#
beta(config-if)#exit
beta(config)#interface Serial2/0
beta(config-if)#
beta(config-if)#exit
beta(config)#interface Serial3/0
beta(config-if)#
beta(config-if)#exit
beta(config)#interface Serial3/0
beta(config-if)#
beta(config-if)#exit
beta(config)#interface Serial2/0
beta(config-if)#
beta(config-if)#exit
beta(config)#interface Serial3/0
beta(config-if)#ip address 192.165.1.5 255.255.255.0
beta(config-if)#no shut

%LINK-5-CHANGED: Interface Serial3/0, changed state to down
beta(config-if)#
```

Después de eso configuramos el serial2/0 del router 4.



```
Router3
Physical Config CLI
IOS Command Line Interface
2 Low-speed serial(sync/async) network interface(s)
32K bytes of non-volatile configuration memory.
63488K bytes of ATA CompactFlash (Read/Write)

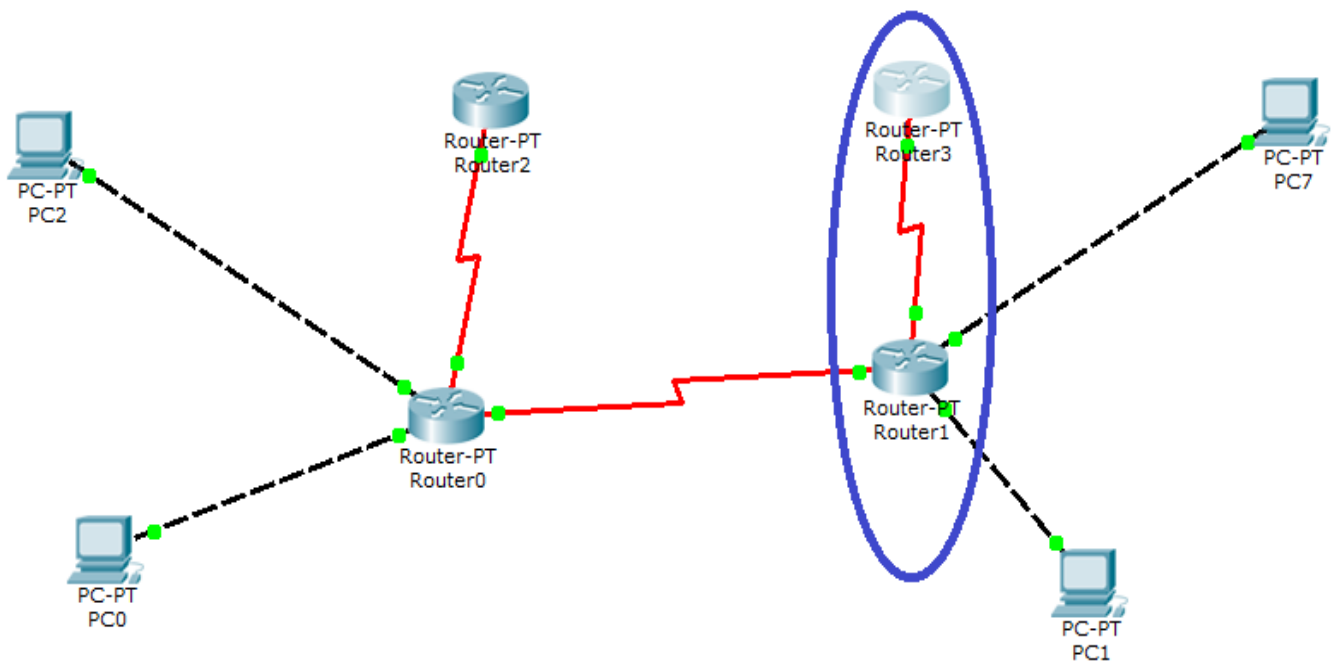
--- System Configuration Dialog ---
Continue with configuration dialog? [yes/no]:
% Please answer 'yes' or 'no'.
Continue with configuration dialog? [yes/no]: n

Press RETURN to get started!

Router>enable
Router#conf t
Enter configuration commands, one per line. End with CNTL/Z.
Router(config)#interface s2/0
Router(config-if)#ip address 172.165.1.4 255.255.0.0
Router(config-if)#no shut

Router(config-if)#
%LINK-5-CHANGED: Interface Serial2/0, changed state to up
```

Y podemos comprobar como ya están conectados, ya que cambio de color.



CONCLUSIÓN

Podemos decir que esta actividad nos dejó un buen sabor de boca ya que me pude percatar o pude entender que levantar los puertos fa es para poder conectar con cualquier dispositivo que no sea otro router, y para conectar entre routers es necesario levantar los seriales.